

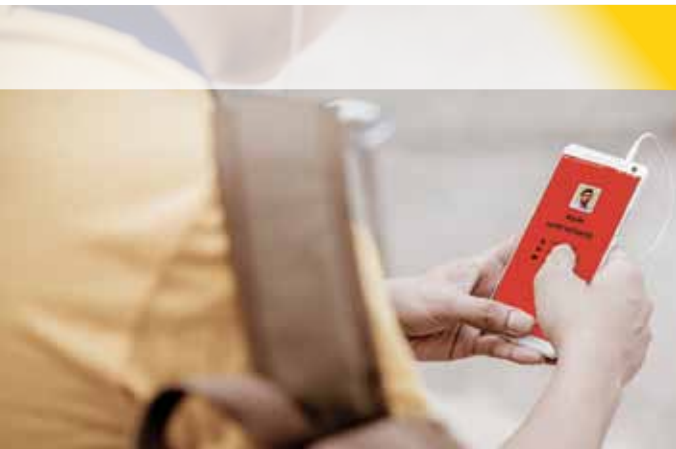
**STANLEY**  
Security



**SAFETY AT  
YOUR FINGERTIPS**



# PERSONAL SAFETY AND SECURITY RESPONSE SOLUTION



## PERSONAL SAFETY APP

The STANLEY Guard Personal Safety App offers versatile safety features for students and staff. Whether the individual is attending a private meeting, traveling alone from one location to another, or is in an area or situation where he or she feels unsafe, the Personal Safety App quickly and conveniently provides safety and peace of mind.



## SECURITY RESPONSE APP

The STANLEY Guard Security Response App allows your on-campus security teams to respond to the safety needs of students and staff members. The Security Response App quickly dispatches your security officers based on alerts sent from the Personal Safety App. Campus police can request backup through the app as well as utilize a checklist feature to ensure they're covering all security points across campus.



## COMMAND CENTER

The STANLEY Guard Command Center is a web-based dashboard that manages student and staff safety on campus. Through the Command Center dashboard, your security team members can be deployed whether they are nearest to the incident or have the proper skill set required for the situation. The dashboard allows for task management by your security team, is a hub for mobile mass notification, and can be used to provide group communication of key safety and security issues. The STANLEY Guard Command Center dashboard can also be used to generate reports in regards to incidents, activities, and managing responses.



# 5 FAST FACTS FOR STUDENTS & STAFF

1

## Emergency Contact List

Students and staff can add emergency contact lists in the app. If they send an alert while off campus, their emergency contact list will be notified.

2

## Customization

Users can control how alerts are activated based on their preference. They can choose to shake the phone, touch the screen, or press a wearable button.

3

## Duress Code

A special code can be entered in emergency situations. The app will appear to close, but a discrete alert will be sent to the Command Center dashboard.

4

## Video Clips

Personal Safety App users can customize which video clips are sent to the Command Center dashboard. Phone storage is not required to utilize this feature.

5

## Dispatch on Expertise

The Command Center dashboard can be used to dispatch your security personnel based on their proximity to the incident or their expertise.

# PROTECT YOUR GREATEST ASSETS

## FEATURES

### FOR STUDENTS AND STAFF

#### Send Alerts

- Whenever students or staff feel unsafe, they can alert your on-campus security by simply shaking their phone, touching the screen, or pressing a wearable button. Their phone can also be used as an alarm, causing it to emit a loud noise and strobe lighting. This easy operation means your campus community gains peace of mind knowing that your security personnel are always within reach.

#### Schedule Meetings

- The Meetings function lets users set a timer for a meeting through the app. If the allotted time runs out and the user does not indicate they are safe, an alert will be sent to the command center and/or emergency contacts. Since the timed alert runs on the server, if the phone is stolen, damaged, or the battery dies, the alert will still communicate the last known location of the device.

#### Journeys

- Students and staff can feel a sense of safety while traveling from one location to another by setting detailed pre-arranged Journeys in the app. The app will monitor their route, timing, and request confirmation of their arrival.

Your command center is alerted if any issues arise.

#### Man-Down Functionality

- Upon activation, if there is no movement from the user's device or it detects another dangerous situation, including a free fall motion or an impact situation such as a car crash, your command center will be alerted.



## FEATURES

### FOR CAMPUSES

#### Mass Notifications

- Your campus security team can send personalized mass notifications via push notifications and/or SMS text messages either campus-wide or to selected groups.

#### Alert Response

- The Security Response mobile app dispatches security personnel in response to emergency incidents received through the Personal Safety App. Officers can document events and collect evidence of the incident on site.

#### Campus Watch

- Let all your students be active participants in creating a safer campus. Using Campus Watch, users of the Personal Safety App can anonymously report incidents they witness such as suspicious activity, theft, an accident, assault, or vandalism, by providing a short statement on the activity or a photo of the situation.

#### Geo-Fencing

- Geo-Fencing assigns your security team members to specific geographic areas to improve their coverage, efficiency, and productivity on campus, while more easily managing the safety of students and staff.
- Geo-Fencing also tracks student and staff locations when alerts are sent through the Personal Safety App: if the user is on campus when sending an alert, your campus security team will be notified. If the user is off campus, his or her emergency contact list will be notified.

#### Security Tasks

- Your security teams can review required tasks in the Security Response App, such as checking fire exits, ensuring doors are locked, and patrolling specific routes. Reports can be generated to indicate overdue tasks and the overall number of tasks completed.



# STEPS TO SAFETY

Users **set off alerts** through the Personal Safety App or wearable button. Their phone immediately begins **gathering video and audio evidence**.

PERSONAL SAFETY APP



Your campus security team **receives the alert** through the Command Center dashboard with evidence and GPS location of the user, **verifies the threat** of the incident, and **dispatches the closest or most qualified campus security officer**.



SECURITY TASKS

ALERT RESPONSE

VERIFY & DISPATCH

SEND ALERTS

JOURNEYS

MASS NOTIFICATIONS

GEO-FENCING

ZONE B

GATHER EVIDENCE

SCHEDULE MEETINGS

MAN-DOWN FUNCTIONALITY

Your campus police receive the user's profile and photo via the app and are guided to the user's device. The Security Response App can be used to **gather evidence** or request backup to **resolve the situation**.



# STANLEY®

## Security

## ABOUT US

STANLEY Security, a division of STANLEY Black & Decker (NYSE: SWK), is a provider of integrated security solutions for commercial and industrial organizations globally. We deliver a comprehensive suite of security products, software and integrated systems with a strong emphasis on service.

Learn more about how STANLEY Security can help meet your security needs.

855-5-STANLEY | [www.stanleycss.com](http://www.stanleycss.com)



© 2017 STANLEY Convergent Security Solutions and STANLEY Black & Decker Canada Corporation. All Rights Reserved. Visit [www.stanleycss.com/licenses.html](http://www.stanleycss.com/licenses.html) for licensing information. 00385 "THE STANLEYGUARD APPLICATION AND SERVICES ARE PROVIDED BY PANICGUARD LIMITED ("PANICGUARD"), AN INDEPENDENT THIRD PARTY SERVICE PROVIDER FOR STANLEY CONVERGENT SECURITY SOLUTIONS, INC. ("STANLEY"). THERE ARE NO REPRESENTATIONS, WARRANTIES, CONDITIONS OR GUARANTEES FROM PANICGUARD, STANLEY OR OUR RESPECTIVE AFFILIATES THAT THE APPLICATION OR THE SERVICES (A) WILL BE SAFE OR SECURE OR WILL BE FREE FROM CORRUPTION, ATTACK, VIRUSES, INTERFERENCE, HACKING OR OTHER SECURITY INTRUSION, (B) WILL BE CONSTANTLY AVAILABLE AND ACCESSIBLE AT ALL TIMES WITHOUT INTERRUPTION, OR (C) CAN OR SHOULD SERVE AS A SUFFICIENT REPLACEMENT FOR, OR SUPPLEMENT TO, THE EMERGENCY SERVICE PROVIDERS IN YOUR AREA AND YOUR OWN SAFETY PRECAUTIONS."